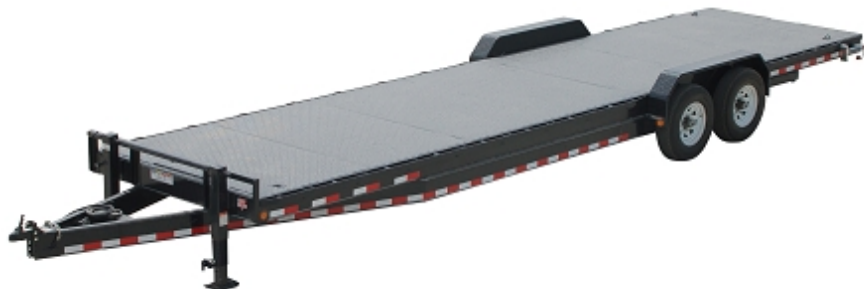




## PJ Trailers - 8" Channel Car Hauler - Available at Tucson Trailer Company

Trailers



### Available Lengths:

- |                              |                              |
|------------------------------|------------------------------|
| <input type="checkbox"/> 20' | <input type="checkbox"/> 32' |
| <input type="checkbox"/> 22' | <input type="checkbox"/> 34' |
| <input type="checkbox"/> 24' | <input type="checkbox"/> 36' |
| <input type="checkbox"/> 26' | <input type="checkbox"/> 38' |
| <input type="checkbox"/> 28' | <input type="checkbox"/> 40' |
| <input type="checkbox"/> 30' |                              |

### Standard Features

- Front Toolbox (GN Only)
- 14,000 lb. G.V.W.R.
- 7,000 lb. x 2 G.A.W.R.
- 2 5/16" Ball A-Frame Coupler
- Safety Chains
- 1 - Drop Leg Jack (10,000 lb.)
- 2 - Posi-lube Brake Axles (7,000 lb.)
- 6 Leaf Slipper Spring Suspension
- 4 - 16" White Spoke Wheels
- 4 - 235/80R16 Radial Tires (3,500 lb.)
- Stake Pockets
- Electric Breakaway Kit w/ Charger
- 9" x 72" Treadplate Steel Fenders
- 5' Channel Ramps w/ Holder
- Rear Trailer Support Stands
- 8" Channel Frame & Tongue
- 3" Channel Crossmembers 16" on Center
- 2" Treated Pine Lumber Deck
- 83" Wide Deck (80" w/ Torsion Axles)
- DOT Approved Flushmount Lifetime LED Lights
- Sealed Wire Harness
- Sand Blasted, Acid Washed, Powder Coated

### Available Options

\* Denotes Standard

#### Coupler Options

- BP 2 5/16" Adjustable (14,000 lb.) \***
- Rigid mount 2-5/16 (25,000 lb.)
- GN 2 5/16" Round (30,000 lb.)
- GN Load-Leveling 2 5/16" Square (30,000 lb.)
- 3" Pintle Eye - Channel-mount (21,000 lb.)
- GN 2 5/16" Square (30,000 lb.)
- GN 2 5/16" Round (25,000 lb.)

#### Tail Options

- Straight deck w/ 5' Slide-in Ramps \***
- 2' Dovetail w/ 5' Slide-in Ramps
- 2' Dovetail w/ 5' Fold-up Ramps
- Straight deck w/ 5' Fold-up Ramps

#### Color Options

- Black Powdercoat \***
- Equipment Yellow Powdercoat

- GN 2 5/16" Square (25,000 lb.)

### Axle Options

---

- (2) 7,000# Elec / Drop
- (2) 7,000# Elec / Spring \*
- (2) 7,000# Elec / Torsion
- (2) 7,000# Surge Drum / Spring
- (2) 7,000# Elec/Hyd Disk / Spring
- (3) 7,000# Elec / Drop
- (3) 7,000# Elec / Spring
- (3) 7,000# Elec / Torsion
- (3) 7,000# Elec/Hyd Disk / Spring
- (2) 7,000# 14Ply Tires Elec / Spring
- (2) 7,000# 14Ply Tires Elec / Torsion
- (2) 7,000# 14Ply Tires Surge Drum / Spring
- (2) 7,000# 14Ply Tires Elec/Hyd Disk / Spring
- (3) 7,000# 14Ply Tires Elec / Spring
- (3) 7,000# 14Ply Tires Elec / Torsion
- (3) 7,000# 14Ply Tires Elec/Hyd Disk / Spring
- (2) 8,000# 14Ply Tires Elec / Spring
- (2) 8,000# 14Ply Tires Elec/Hyd Disk / Spring
- (3) 8,000# 14Ply Tires Elec / Spring

- Grey Powdercoat
- Red Powdercoat
- White Powdercoat

### Other Options

---

- 2nd Jack (Bumper Pull)
- Plate for Winch
- 6" Taller GN Riser
- Douglas Fir Lumber
- 9,990 G.V.W.R.
- Rubrail
- 12"oc Crossmembers
- 1 Pair D-Rings
- Rough Oak Floor
- Drive Over Fenders
- Receiver Hitch
- 2 3/8" Removable Pipetop on Siderails
- Diamond Plate Running Boards
- Steel Floor & 4 D-Rings
- Front Toolbox (Bumper Pull Only)
- 102" Deck Width
- Mount Only for Spare Tire
- Spare Tire and Mount (Bumper Pull)
- Deck on the Neck (GN Only)
- Winch 12VDC (12,000 lb.) Incl. Front Toolbox
- 2-speed Jacks (12,000 lb.)
- HD Semi Trailer 2x Jacks (25,000 lb.) No Frt T/box